



# **Put Artist and Title to Shoutcast DNAS Server**

Ready-to-Use Solution

# Introduction

The **Magic RDS 4** is a software for **FM radio stations** and **Internet radio stations** which incorporates a set of simple text publishing tools. Typically that text consists of artist and title of currently playing song which is provided by your broadcast automation system or just an mp3 player. That text can be redirected to your **website or any application and device** which accepts some of the connection types and protocols offered by the Magic RDS 4.

Multiple text sources and text outputs are supported, as well as text filtering and replacing. The text sources are switchable during the day, based on several conditions or a schedule.



Broadcast Automation



Magic RDS 4



Your Shoutcast Server

## TIP

*For evaluation and debug purposes, all functions and features are available in the Basic (free) license as well.*

# Implementation Guide

Following steps are usually required for getting it working:

## 1. Add a new connection

Adding a new connection (of the 'RDS Encoder' kind) to the Magic RDS 4 will create a dynamic HTTP GET request which will update the Shoutcast server any time the current song or program item changes.

Initially, the Magic RDS 4 application may be either blank or other connections may already exist. If the application already serves your RDS encoders, you may skip the next step.

## 2. Create a new external text source (optional)

The external text source is a feature of the Magic RDS 4 whose purpose is reading of the text we want to publish. Several source types and processing options are supported, incl. local file read, http read, ftp read, plain text, XML, JSON, RegEx etc. Once the text changes or updates, it is forwarded to the Connection. A delay can be configured to sync the text with listener's audio.

# Step 1 - Add a new connection (RDS Encoder)

**Add New Connection**

**Connection Kind**  
RDS Encoder

**Device Model**  
User Defined 1

**Connection Name [?]**  
Shoutcast

**Group Name (Optional) [?]**

**Connection Type [?]**  
Internal Channel

**Internal Channel - Data Distribution Settings**  
sendhttp url: "http://localhost:8000/admin.cgi?pass=changeme&sid=1&mode=updinfo&song=%data%"

\* for all encoders

**Syntax**  
sendto "connection\_name" or sendto source: "external\_text\_source\_name"  
saveto file: "file\_path\_and\_name" [mode: "rewrite|append"]  
sendhttp url: "URL" Example: sendhttp url: "http://localhost/?s=%data%"

Help Cancel Add

- Double-click on the "Add New Connection" icon
- Select Connection Kind: **RDS Encoder**, Device Model: **User Defined 1**, Connection Type: **Internal Channel**, Connection Name: **Shoutcast** (or any name you like)
- In the Data Distribution box, type a line in following format:  
`sendhttp url:"http://host:port/admin.cgi?pass=changeme&sid=1&mode=updinfo&song=%data%"`

where

**host** is your Shoutcast server IP address or domain name

**port** is your Shoutcast server port, default is 8000 (*in sc\_serv.conf it is the parameter portbase=*)

**pass** is your Shoutcast server password (*in sc\_serv.conf it is the parameter password=*)

**sid** is the stream ID, usually 1

**%data%** will be replaced by (URL-encoded) text in the final output. Type it as you see.

**Example:**

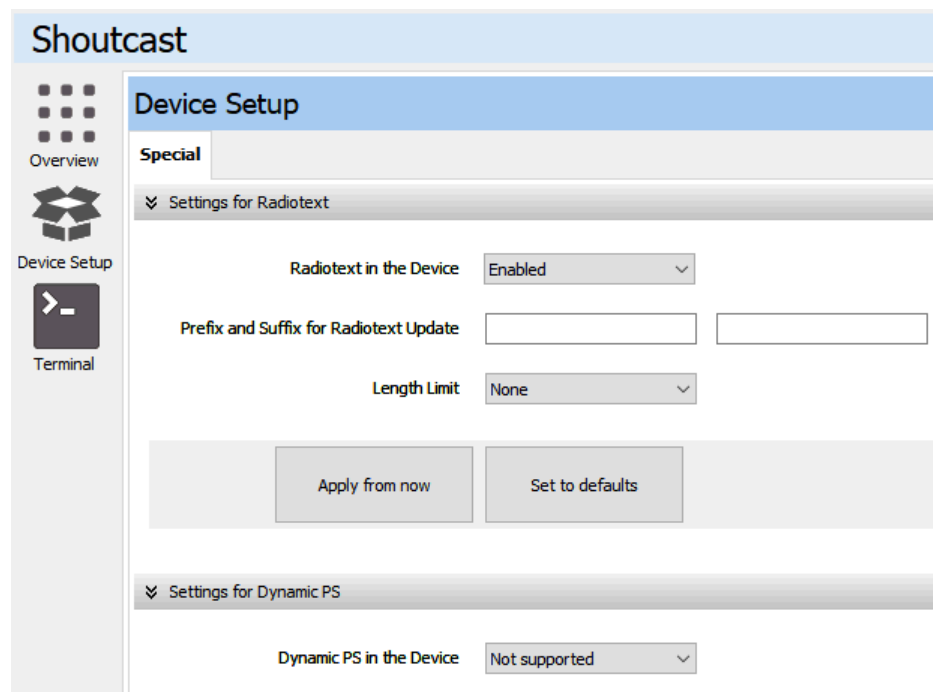
```
sendhttp url:"http://localhost:8000/admin.cgi?pass=changeme&sid=1&mode=updinfo&song=%data%"
```

- Confirm by Add button
- Go to Device Setup and make sure it is configured as follows:

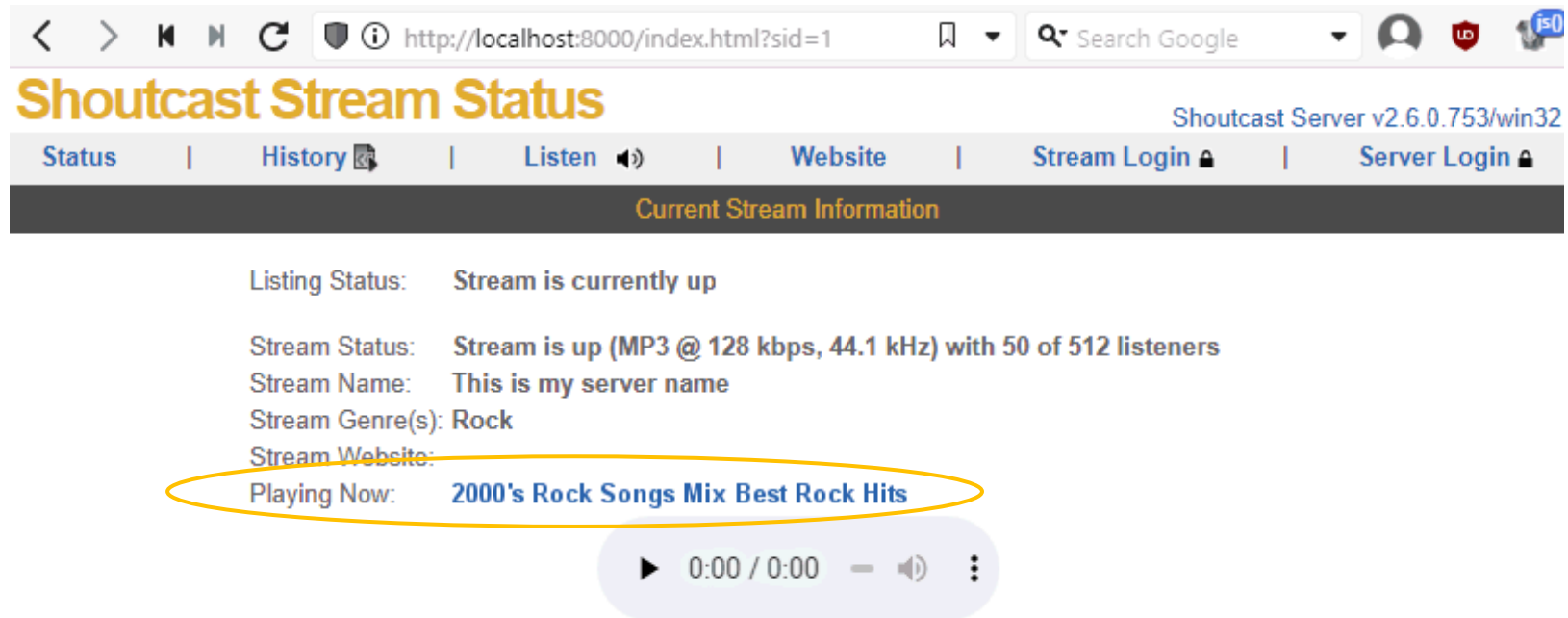
Radiotext: Enabled,

prefix and Suffix: *blank*,

Dynamic PS: Not supported (disabled).



Once everything is set right (and the external text source is already enabled), you can see the result in your web browser:



The screenshot shows a web browser window with the address bar displaying `http://localhost:8000/index.html?sid=1`. The page title is "Shoutcast Stream Status" and the version is "Shoutcast Server v2.6.0.753/win32". The navigation menu includes "Status", "History", "Listen", "Website", "Stream Login", and "Server Login". The "Current Stream Information" section shows the following details:

- Listing Status: Stream is currently up
- Stream Status: Stream is up (MP3 @ 128 kbps, 44.1 kHz) with 50 of 512 listeners
- Stream Name: This is my server name
- Stream Genre(s): Rock
- Stream Website:
- Playing Now: **2000's Rock Songs Mix Best Rock Hits**

Below the stream information is a media player control bar showing a play button, a progress indicator at 0:00 / 0:00, a volume icon, and a menu icon.

For more details about how to configure the Shoutcast DNAS server, please contact your network administrator or the Shoutcast community. For other streaming software or services, the procedure may be similar but it is necessary to follow the original documentation for all specific settings and exact URL format.

### TIP

*You may fill more lines to the Data Distribution box if there's a need to send the text to more destinations (servers). You may save the text to a local file as well (see the Syntax).*

# Step 2 - Create a new external text source (optional)

- Select Tools - External Text Sources
- Go to the Text Sources card and configure a new source (click on the Help button for details or see some examples on our website)
- Click on the Test button and check the result
- Go to the Radiotext 1 card and make sure the source is enabled and selected
- Go to the Destinations card and check if following line is present: `sendto ""` or `sendto "Shoutcast"`

