

Several assembly options are offered for the PIRA32 RDS Encoder Module. The customer may specify assembly options for key mechanical components and LED's.

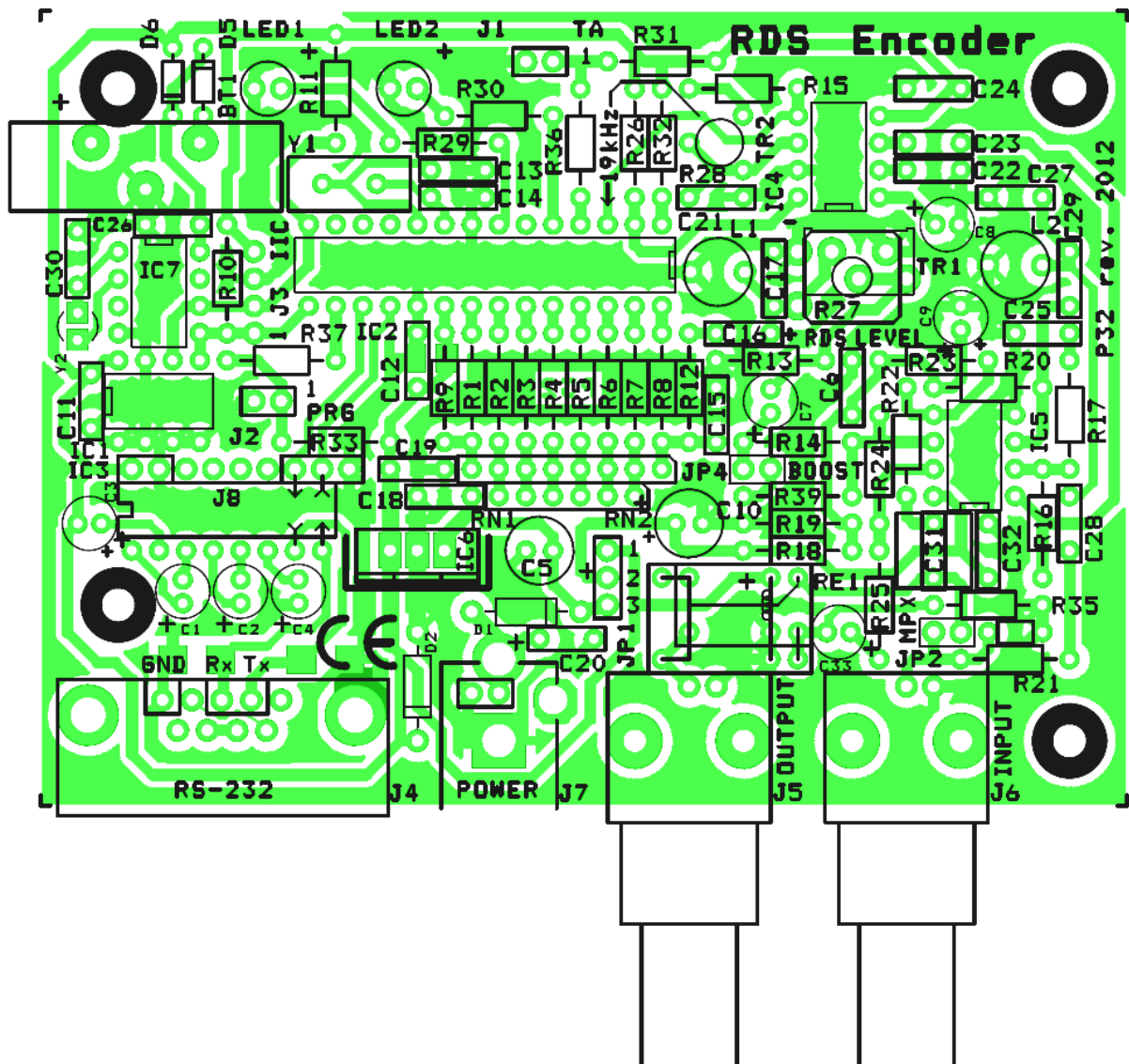
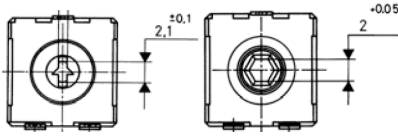


Figure 1 – The module layout.

Component	Default option	Options available
<b>LED1, LED2</b>	Horizontal on-board 5mm white LED, shortest possible leads	<ul style="list-style-type: none"> <li>LED horizontal/vertical (horizontal = front panel indication, vertical = top side indication), 3mm/5mm/8mm, white/blue/red, selectable lead length (measured from mounting holes on top side to the LED's package)</li> <li>Connector pins only (RM=2.54mm)</li> <li>Don't place anything</li> </ul>
<b>J1, J2</b> (TA, PRG)	Connector pins RM=2.54mm	<ul style="list-style-type: none"> <li>Connector pins (RM=2.54mm)</li> <li>Don't place anything</li> </ul>
<b>R27</b> (TR1, RDS level)	Horizontal trimmer type A (top side control)	<ul style="list-style-type: none"> <li>Trimmer horizontal/vertical (horizontal = top side control, vertical = front panel control)</li> <li>Trimmer type A/B</li> </ul>  <ul style="list-style-type: none"> <li>Don't place anything</li> </ul>
<b>J5, J6</b> (Input, Output)	BNC connector	<ul style="list-style-type: none"> <li>BNC connector</li> <li>Connector pins only (RM=2.54mm)</li> </ul>
<b>J7</b> (Power)	DC connector 2.1 mm	<ul style="list-style-type: none"> <li>DC connector 2.1 mm</li> <li>DC connector 2.5 mm</li> <li>Connector pins only (RM=2.54mm)</li> <li>Don't place anything</li> </ul>
<b>J4</b> (RS-232)	DB9 female connector	<ul style="list-style-type: none"> <li>DB9 female connector</li> <li>Connector pins only (RM=2.54mm)</li> </ul>
<b>IC3/J8</b>	MAX232 line converter	<ul style="list-style-type: none"> <li>MAX232 line converter</li> <li>Connector pins only (RM=2.54mm) (for connection of custom converter or MCU)</li> </ul>

#### Important notes:

- Components not specified in the order are expected to be in the default option.
- The list of options is not final – don't hesitate to suggest another option.
- Always specify the assembly options in your each order, default assembly will be assumed otherwise!

#### Order example:

PIRA32 Module, LED's blue horizontal 15mm lead length, don't place J2, R27 vertical type B.

#### How to order:

- Visit our shop at <http://pira.cz/>
- Select the PIRA32 Module quantity
- Specify assembly options in Comments or contact us via email: [mail@pira.cz](mailto:mail@pira.cz)