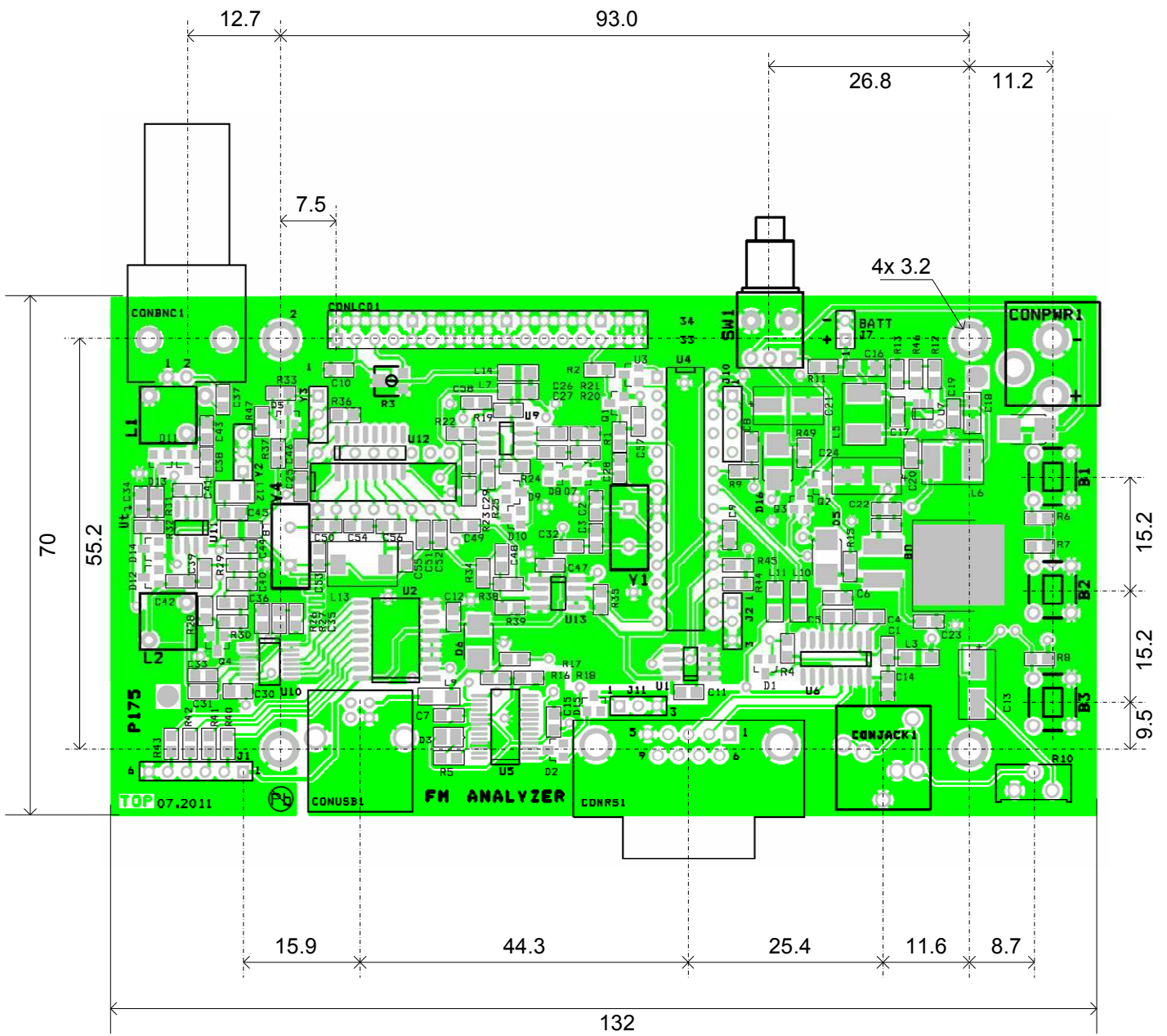


# P175 Board Mechanical Data



## 1. General description

PRC2004AW, a dot-matrix character LCD module, design for displaying 4 line 20 row characters. Character font is 5X7 dots with cursor. The PRC2004AW provides two types of interfaces to MPU: 4-bit and 8-bit interfaces.

PRC2004AW can includes EL or LED backlight for custom design. The custom can design for color of EL or LED backlight, viewing angle and LCD type.

## 2. Maximum absolute limit

Characteristics	Symbol	Ratings	Remark
Operating Voltage	VDD	-0.3V to +7.0V	
Driver Supply Voltage	V <sub>LCD</sub>	VDD - 12V to VDD + 0.3V	
Input Voltage Range	V <sub>IN</sub>	-0.3V to VDD + 0.3V	
Operating Temperature	T <sub>A1</sub>	0°C to+50°C	Normal temperature LCM
	T <sub>a2</sub>	-20°C to+60°C	Wide temperature LCM
Storage Temperature	T <sub>STO</sub>	-25°C to+70°C	

Note: Stresses beyond those given in the Absolute Maximum Rating table may cause operational errors or damage to the device.

## 3. Mechanical characteristics

### a) Physical data

ITEM	Standard value	Unit	Remark
Number of characters	20×4		
Module size	98.0×60.0×14.0	mm	
Viewing area	76.0×26.0	mm	
Active area	70.4×20.80	mm	
Character size	4.75×2.95	mm	
Character pith	5.35×3.55	mm	
Approx. weight		g	
Drive method	1/5bias 1/16 duty		

### b) External dimensions

